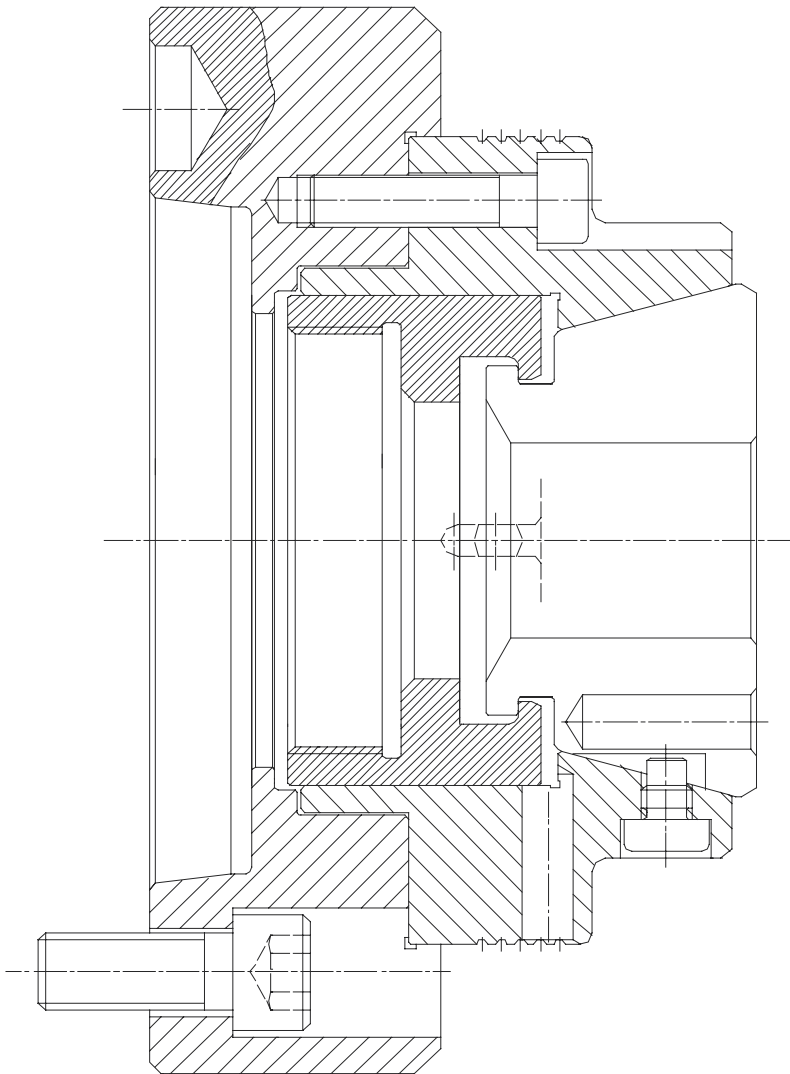


Spannsystem für Dreh-, Fräs-, Rundtaktmaschinen etc. System For Turning, Milling And Indexing Table Machines

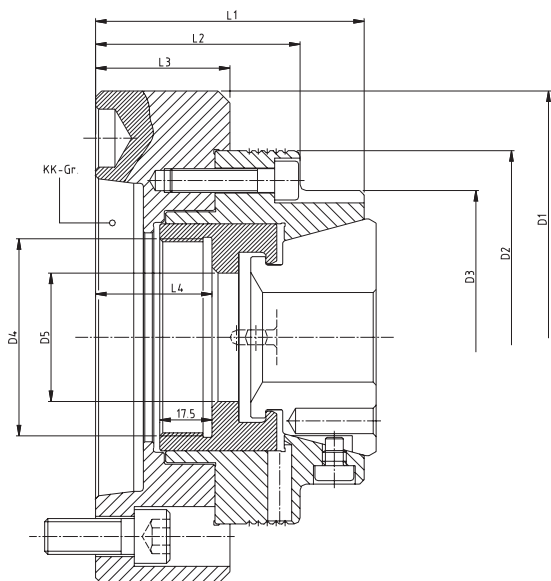


Dieses Axialzug-Spannsystem ist auf Dreh-, Schleif-, Fräs- und Rundtaktmaschinen im Einsatz. Als durchgängig modulares System ist es möglich, die einzelnen Komponenten des Futters je nach Einsatz zusammenzustellen. Benötigt wird lediglich der maximale Werkstückdurchmesser und die Spindelanschlußmaße Ihrer Maschine. Die Grundkomponenten sind dadurch festgelegt. Der entsprechende Adapter kann auch durch Sie gefertigt werden.

This axial draw back chucking system can be used on turning, grinding, milling and indexing table machines. As this is a modular system, you can put the individual components of the chuck together as required. All you need is the maximum work piece diameter and the size of the spindle nose of your machine. The main component can be determined from these. The appropriate adapter can also be fabricated by the customer.

Durchgangsfutter, Kurzkegelaufnahme

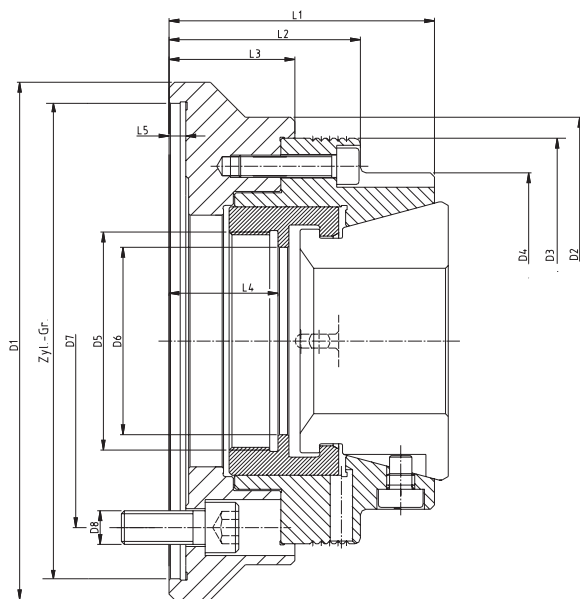
Trough Bore Chuck, Short Taper Flange



Nr./ No.	Ber./Size	KK-Gr.	Typ/Type	D1	D2	D3	D4	D5	L1	L2	L3	L4
036.9003/00	42	KK5	TS42/5D	140	125	102	M66x1,5	43	90	68,5	45	39
036.9004/00	42	KK6	TS42/6D	165	125	102	M66x1,5	43	90	68,5	45	39
036.9005/00	65	KK5	TS65/5D	155	145	120	M78x1,5	67	95	68,5	45	39
036.9006/00	65	KK6	TS65/6D	165	145	120	M78x1,5	67	95	68,5	45	39
036.9007/00	65	KK8	TS65/8D	210	145	120	M78x1,5	67	100	73,5	50	42

Durchgangsfutter, Zylindrische Aufnahme

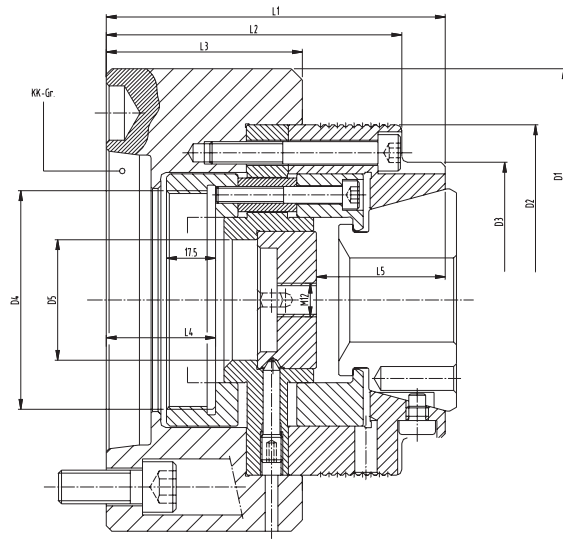
Trough Bore Chuck, Cylindrical Flange



Nr./No.	Ber./Size	Zyl.-Gr.	D1	D2	D3	D4	D5	D6	D7	D8	L1	L2	L3	L4	L5
036.9015/00	42	120	140	140	125	102	M66x1,5	43	104,8	3xM10	85	63,5	40	34	6
036.9017/00	42	140	150	150	125	102	M66x1,5	43	104,8	3xM10	90	63,5	45	39	6
036.9019/00	65	140	160	160	145	120	M78x1,5	67	104,8	6xM10	100	73,5	50	44	6
036.9020/00	65	170	185	160	145	120	M78x1,5	67	133,4	6xM12	95	68,5	45	39	6
036.9022/00	65	120	160	160	145	120	M78x1,5	67	104,8	6xM10	100	73,5	50	44	6

Anschlagfutter mit vollem Durchlass, Kurzkegelaufnahme

Endstop Chuck With Full Passage (removable endstop), Short Taper

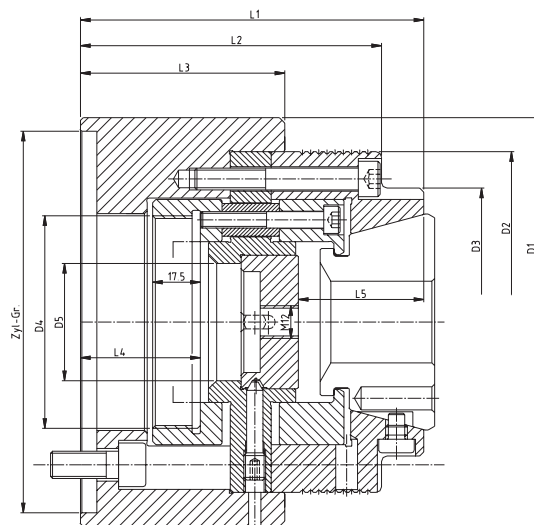


* Air sensing (Luftanlagekontrolle)

Nr./No.	Ber./Size	KK-Gr.	Typ/Type	D1	D2	D3	D4	D5	L1	L2	L3	L4	L5
036.9009/00	42	KK4	TS42/4A	140	125	102	M52 x 1,5	43	125	109,5	74	39	46
036.9010/00	42	KK5	TS42/5A	140	125	102	M78 x 1,5	43	212	105,5	70	39	46
036.9011/00	42	KK6	TS42/6A	165	125	102	M78 x 1,5	43	121	105,5	70	39	46
036.9021/00*	42	KK5	TS42/5A	140	125	102	M78 x 1,5	43	121	105,5	70	39	66
036.9012/00	65	KK5	TS65/5A	155	145	120	M78 x 1,5	66	130	111,5	70,5	39	55
036.9013/00	65	KK6	TS65/6A	165	145	120	M78 x 1,5	66	130	111,5	70,5	39	55
036.9014/00	65	KK8	TS65/8A	210	145	120	M78 x 1,5	66	135	116,5	75,5	44	55
036.9032/00*	100	KK6	TS100/6A	215	215	180	M95 x 2	107	177	162	72	55	99,5
036.9033/00*	100	KK8	TS100/8A	230	215	180	M115 x 2	107	178	157	51	50	99,5
036.9241/00*	100	KK11	TS100/11A	280	215	180	M112 x 2	102	205	184	76	47,5	99,5

Anschlagfutter mit vollem Durchlass, Zylindrische Aufnahme

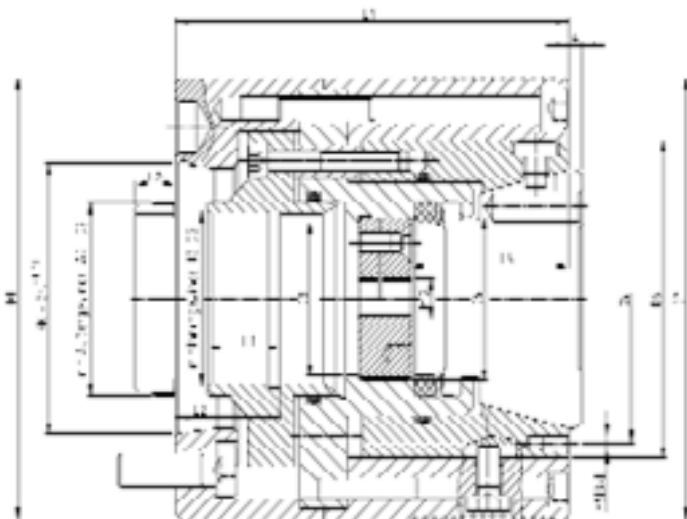
Endstop Chuck With Full Passage (removable endstop), Cylindrical Flange



Nr. / No.	Ber./Size	Zyl.-Gr.	Typ	D1	D2	D3	D4	D5	L1	L2	L3	L4	L5
036.9016/00	42	Ø140	TS42/140ZA	150	125	98	M78x1,5	43	126	110,5	75	44	46
036.9018/00	65	Ø170	TS65/170ZA	185	145	120	M78x1,5	66	130	111,5	70,5	39	55
036.9034/00	100	Ø170	TS100/170ZA	215	215	180	M95 x 2	102	165	144	72	37	99,5
036.9035/00	100	Ø220	TS100/220ZA	230	215	180	M115 x 2	102	165	144	72	37	99,5

DL-Spannfutter ohne Längenversatz beim Spannen,
Kurzkegel-Aufnahme

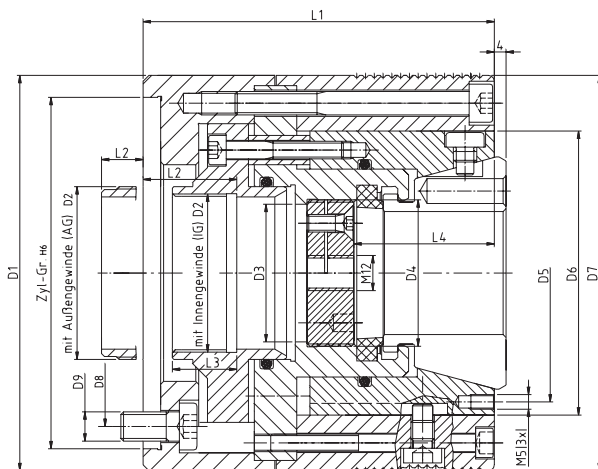
DL-Precision Dead Length Chuck, Short Taper Flange



Nr./No.	Ber./Size	KK-Gr.	Typ/Type	D1	D2	D3	D4	D5	D6	D7	L1	L2	L3	L4
036.9050/00	32	KK3	TS32/3DL	130	IGM24x1	19	39	74	84	96	110	21	20	54,5
036.9051/00	32	KK4	TS32/4DL	130	IGM50x1,5	33	39	74	84	96	110	35	22	54,5
036.9052/00	32	KK5	TS32/5DL	130	IGM52x1,5	33	39	74	84	96	110	35	22	54,5
036.9054/00	42	KK5	TS42/5DL	135	IGM54x1,5	47	M50x1,5	88	97	135	120	32	22	48
036.9055/00	42	KK6	TS42/6DL	160	IGM54x1,5	43	M50x1,5	88	97	135	120	32	22	48
036.9057/00	65	KK5	TS65/5DL	160	IGM78x1,5	67	M72x1,5	110	126	160	125	40	17,5	54,5
036.9058/00	65	KK6	TS65/6DL	160	AGM74x1,5	67	M72x1,5	110	126	160	106	14	22	54,5
036.9059/00	65	KK6	TS65/6DL	160	IGM78x1,5	67	M72x1,5	110	126	160	120	35	17,5	54,5
036.9060/00	65	KK8	TS65/8DL	210	IGM78x1,5	67	M72x1,5	110	126	160	125	40	17,5	54,5

DL-Spannfutter ohne Längenversatz beim Spannen,
Zylindrische Aufnahme

DL-Precision Dead Length Chuck, Cylindrical Flange



Nr./No.	Ber./Size	Zyl.Gr.	Typ/Type	D1	D2	D3	D4	D5	D6	L1	L2	L3	L4
036.9043/00	42	120	TS42/120ZDL	135	IGM54x1,5	47	M50x1,5	88	97	120	32	22	48
036.9044/00	42	140	TS42/140ZDL	150	IGM54x1,5	47	M50x1,5	88	97	120	32	22	48
036.9047/00	65	170	TS65/170ZDL	185	IGM78x1,5	67	M72x1,5	110	126	118	33	17,5	55
036.9048/00	65	170	TS65/170ZDL	185	IGM54x1,57	67	M72x1,5	110	126	118	2	22	55

Maschinen Machine Tool						Futterdaten Dimensions				
Maschinen-hersteller Manufacturer	Spannax® Nr./No.	Typ/Type	Spindel Durchlass Capacity	Spindel- nase Spind. nose	Zugrohrgewinde Draw bar thrad	Größe Size	max. Durchlass max. dia	Anschluss- gewinde con. thread	Gesamt- länge mit Spannkopf total length	
Biglia	036.9229/00	B510 u.B650YS Hs	67.5	KK6	AG M79x1.5	65	67	M79x1.5	135	
	036.9237/00	B511 - 35 Hs	33.0	KK5	AG M50x1.5	32	33	M50x1.5	110	
	036.9238/00	B511 - 35 Gs	33	KK3	AG M24x1	32	19	M24x1	110	
	036.9240/00	B470 Hs	67.5	KK6	AG M79x1.5	65	67	M79x1.5	100	
Daewoo	036.9223/00	Puma 230MB Hs	66	KK6	AG M72x1.5	42	43	M72x1.5	125	
	036.9241/00	Puma 300C Hs	103	KK11	AG M112x2	100	102	M112x2	206	
Doosan	036.9253/00	Z290 SMY	33	Z 110	AG M42x1.5	65	33	M42x1.5	130	
EMCO	036.9006/00	Turn 365	66.5	KK6	AG M72x1,5	65	67	M78x1.5	99	
Farma	036.9012/00	KK5		KK5	IG M20	65	67	M78x1.5	134	
Gildemeister	036.9231/00	Twin 32 Hs	36	Z 120	IG M45x1.5	42	14	M45x1.5	152	
	036.9228/00	Twin 32 Hs	36	Z 120	IG M45x1.5	42	36	M45x1.5	64	
	036.9227/00	Twin 42 RG1 Hs	44	Z 120	IG M52x1.5	42	47	M52x1.5	64	
	036.9015/00	Twin 42 RG1 Hs	44	Z 120	IG M52x1.5	42	43	M66x1.5	90	
	036.9248/00	Twin 42 RG1 Hs	44	Z 120	IG M52x1.5	42	43	M66x1.5	120	
	036.9043/00	Twin 42 RG1 Gs	44	Z 120	IG M52x1.5	42	47	M54x1.5	90	
	036.9020/00	MF Twin 65 Hs	67	Z 170	AG M78x1.5	65	67	M78x1.5	100	
	036.9016/00	CTX 310 Hs	52	Z 140	IG M60x1.5	42	43	M78x1.5	130	
	036.9018/00	CTX 310 Hs	52	Z 140	IG M60x1.5	65	67	M78x1.5	135	
	036.9044/00	CTX 320 Hs	68.5	Z 140	IG M60x1.5	42	47	M54x1.5	124	
	036.9044/00	CTX 320 Gs	36	Z 120	AG M36x1.5	42	47	M54x1.5	124	
	036.9020/00	CTX 420 Hs	66	Z 170	IG M74x1.5	65	67	M50x1.5	100	
	036.9020/00	CTX 410 Hs	66	Z 170	IG M74x1.5	65	67	M50x1.5	100	
	Index	036.9006/00	GU 800 Hs,Pos.1,2,3	66	Z 185	IG M68x1.5	65	67	M78 x1.5	100
		036.9224/00	G 300 Hs	66	KK6	AG M76x1.5	65		M76x1.5	157
		036.9225/00	GE 65 Hs	66	IP 130	AG M72x1.5	65	67	M72x1.5	67
036.9259/00		G 300 Hs	66	KK6	AG M76x1.5	65		M78x1.5	175	
Mazak	036.9003/00	QT6T Hs	33	KK5	AG M40x1.5	42	43	M66x1.5	94	
Miyano	036.9255/00	BNJ-34 Gs.	30	Z 110	AG M40x1.5	42	40	M48x1.5	102	
	036.9256/00	BNJ-34 Hs.	36	Z 110	AG M45x1.5	42	43	M78x1.5	126	
	036.9236/00	BNJ-42S Hs.	43	Z 110	AG M52x1.5	65	67	M78x1.5	126	
	036.9239/00	BNJ-42S Hs.	43	Z 110	AG M52x1.5	42	43	M52x1.5	126	
	036.9247/00	BNJ-42S Hs.	43	Z 110	AG M 52x1.5	42	43	M66x1.5	92	
	036.9235/00	BNJ-42S Gs.	26	Z 120	AG M 35x1.5	42	43	M48x1.5	104	
	036.9016/00	LZ-01 Ry Hs	43	Z 140	AG M 45x1.5	42	43	M78x1.5	130	
	036.9006/00	BNE-D51S Hs	52	KK6	AG M60x2	65	67	M78x1.5	99	
	036.9234/00	BNE-D51S Gs	26	Z 120	AG M35x1	65	67	M78x1.5	105	
	036.9251/00	ABX 51TH Hs/Gs	52	KK6	AG M60x2	65	67	M78x1.5	124	
	036.9252/00	ABX 51TH Hs/Gs	52	KK6	AG M60x2	32	30	M50x1.5	110	
	036.9055/00	ABX 51TH Hs/Gs	52	KK6	AG M60x2	42	43	M54x1.5	124	
036.9011/00	ABX 51TH Hs/Gs	52	KK6	AG M60x2	42	43	M78x1.5	125		
036.9004/00	ABX 51TH Hs/Gs	52	KK6	AG M60x2	42	43	M66x1.5	90		
Mori Seiki	036.9059/00	CL1500-2000 Hs	66	KK6	AG M72x1.5	65	67	M78x1.5	125	
	036.9242/00	ZT 1500-Y Hs	52	KK5	AG M60x1.5	65	67	M78x1.5	140	
	036.9245/00	ZT 1500-Y Gs	52	KK5	AG M60x1.5	42	43	M60x1.5	124	
036.9243/00	SL 150 u. SL 153 Hs	46	KK5	AG M55x1.5	42	43	M66x1.5	140		
Nakamura	036.9221/00	TW 20 Hs	52/66	KK6	IG M74x1.5	65	67	M78x1.5	125	
Tome	036.9222/00	TW 20 Gs	52	KK6	IG M58x1.5	65	67	M78x1.5	125	
	036.9220/00	SC-250 Gs	52	KK5	IG M58x1.5	65	67	M78x1.5	125	
	036.9013/00	SC-250 MR Hs		KK6	AG M52x1.5	65	67	M78x1.5	135	
	036.9057/00	SC-250 MR Gs		KK5	AG M52x1.5	65	67	M78x1.5	124	
	036.9013/00	TC67L-NC Hs		KK6	IG M72x1.5	65	67	M78x1.5	135	
Traub	036.9006/00	TNS 60/6D Hs	66	KK6	AG M72x1.5	65	67	M78x1.5	100	
	036.9058/00	TNC 65 Dby		KK6	AG M72x1.5	65	67	M78x1.5	110	
	036.9014/00	TNA 500 Hs		KK8	AG M96x1.5	65	67	M78x1.5	140	
	036.9054/00	TNC 42-65 Hs	47	KK5	AG M54x1.5	42	43	M54x1.5	124	

Spannax Typ	Spannax Adaption Nr./No.	Bemerkung Description
A-S	-	
DL-S	-	
DL-S	-	
D-S	-	
A-S	-	
A-S	-	
DL-S	-	
D	036.9105/0	
A	036.9124/0	
A-S	incl.	
SF	-	
SF	-	
D	036.9118/00	
D-S	036.9248/02	
DL	036.9119/00	
D	036.9128/0	
A	036.9138/00	
A	036.9120/0	
DL	036.9133/01	
DL	036.9133/02	
D	036.9129/00	
D	036.9140/00	
D	036.9125/1	
A-S	incl.	
SF	-	
A-S	incl.	
D	036.91018/0	
DL-S	incl.	
A-S	incl.	
A-S	incl.	
DL-S	incl.	
D-S	incl.	
DL-S	incl.	
A	36.9139/00	
D	36.9126/0	
D	incl.	
DL-S	incl.	
DL-S	incl.	
DL	036.9135/0	
A	036.9136/0	
D	036.9137/0	
DL	036.9121/0	
D-S	incl.	
DL-S	-	
D-S	incl.	
D-S	incl.	
D-S	incl.	
D-S	incl.	
A	036.9131/00	
DL	036.9132/00	
A	036.91310/0	
D	036.9112/0	
DL	036.9114/00	
A	036.9127/00	
DL	036.9054/00S	

DL = ohne Längenversatz beim Spannen
Hs = Hauptspindel
D-S = Durchgangsfutter-Sonder
Gs = Gegenspindel
Zf = Zwischenflansch
IG = Innengewinde
D = Durchgangsfutter
A = Anschlagfutter
SF = Spezialfutter
A-S = Anschlagfutter-Sonder
DL-S = DL-Sonderfutter
AG = Außengewinde

DL = Dead Length
Hs = Main Spindle
D-S = Through-Hole Chuck Special
Gs = Sub Spindle
Zf = Flange Version
IG = ID Thread
D = Through-Hole Chuck
A = Endstop Chuck
SF = Special Chuck
A-S = Endstop Chuck Special
DL-S = Dead Length Special
AG = AD Thread

Sollten Sie Ihren Maschinentyp in dieser Tabelle nicht finden,
fordern Sie bitte unsere neuesten Unterlagen an!

If you can't find your machine type in this table, please request
our current product brochures!

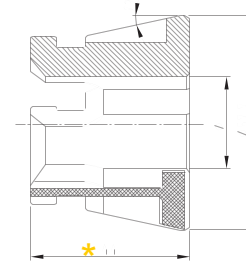
Rubber Flex GT® 32 Spannkopf

Rubber Flex GT® 32 Clamping Head

Profil	Nr./No.	glatt smooth	Querrillen serrated	Längs- u. Querrillen double serrated	steigend in steps
rund round	T0032R...G T0032R...QL T0032R...LL	4-32	8-10	11-32	1,0 mm 1,0 mm 1,0 mm
4-kant square	T0032V...G T0032V...QL T0032V...QL	7	8-9 10-22		1,0 mm 1,0 mm 1,0 mm
6-kant hexagon	T0032S...G T0032S...QL T0032S...QL	7	8-9 10-27		1,0 mm 1,0 mm 1,0 mm

Bestellbeispiel GT32 rund, 20mm glatt = T0032R 020 000 G
 Order sample GT32 round, 20mm smooth = T0032R 020 000 G

* Ausführung QL und LL Vorbau-Maß +5 mm



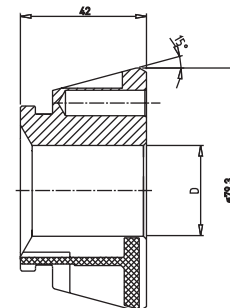
Rubber Flex GT® 42 Spannkopf

Rubber Flex GT® 42 Clamping Head

Profil	Nr./No.	glatt smooth	Querrillen serrated	Längs- u. Querrillen double serrated	steigend in steps
rund round	T0042R...G T0042R...QL T0042R...LL	4-42	8-10,5	11-42	0,5 mm 0,5 mm 0,5 mm
4-kant square	T0042V...G T0042V...QL	7	8-30		1,0 mm 1,0 mm
6-kant hexagon	T0042S...G T0042S...QL T0042S...QL	7	8-32 33-36		1,0 mm 1,0 mm 1,0 mm

Bestellbeispiel GT42 rund, 20mm glatt = T0042R 020 000 G
 Order sample GT42 round, 20mm smooth = T0042R 020 000 G

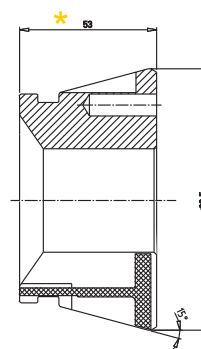
* Ausführung QL und LL Vorbau-Maß +5mm



Rubber Flex GT® 65 Spannkopf

Rubber Flex GT® 65 Clamping Head

Profil	Nr./No.	glatt smooth	Querrillen serrated	Längs-u. Querrillen double serrated	steigend in steps
rund round	T0065R...G T0065R...G T0065R...QL T0065R...LL	4+4,5 5-65	8-10,5	11-65	0,5 mm 0,5 mm 0,5 mm
4-kant square	T0065V...QL T0065V...QL T0065V...QL		8-32 33-40 41-46		1,0 mm 1,0 mm 1,0 mm
6-kant hexagon	T0065S...G T0065S...QL T0065S...QL T0065S...QL T0065S...QL T0065S...QL	7	8-9 10-32 33-40 41-50 51-56		1,0 mm 1,0 mm 1,0 mm 1,0 mm 1,0 mm



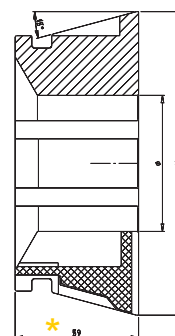
Bestellbeispiel GT65 rund, 20mm glatt = T0065R 020 000 G
 Order sample GT65 round, 20mm smooth = T0065R 020 000 G

* Ausführung QL und LL Vorbau-Maß +5 mm

Rubber Flex GT® 100 Spannkopf

Rubber Flex GT® 100 Clamping Head

Profil	Nr./No.	glatt smooth	Querrillen serrated	Querrillen double serrated	steigend in steps
rund round	T0100R...G T0100R...QL T0100R...QL T0100R...LL	42-100	50-60 61-70	42-100	1,0 mm 1,0 mm 1,0 mm 1,0 mm
4 - kant square	T0100V...QL T0100V...QL		50-60 61-70		1,0 mm 1,0 mm
6 - kant hexagon	T0100S...QL T0100S...QL T0100S...QL		50-60 61-70 71-86		1,0 mm 1,0 mm 1,0 mm



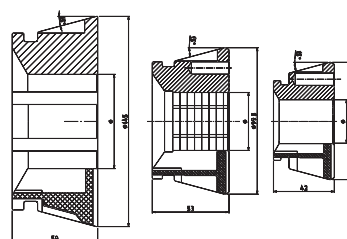
Bestellbeispiel GT100 rund, 60mm glatt = T0100R 060 000 G
 Order sample GT100 round, 60mm smooth = T0100R 060 000 G

* Ausführung QL und LL Vorbau-Maß +5 mm

Rubber Flex GT® Spannkopf weich

Rubber Flex GT® Emergency Clamping Head

Größe Size	rund/glatt round/smooth	Nr./No.
Gr. 42	5, 15, 18, 30, 32	T0042W
Gr. 65	8, 20, 30, 40, 42	T0065W
Gr. 100	30, 45, 65, 90	T0100W



Wechselvorrichtungen

Changing Device

Manuell manual	
	Nr./No.
WM 32	036.9961/00
WM 42	036.9962/00
WM 52	036.9963/00
WM 65	036.9964/00

Pneumatisch pneumatic	
	Nr./No.
WP 42	036.9950/00
WP 65	036.9951/00
WP 100	036.9952/00



Ausdrehringe

Turning Fixture

Ausdrehringe werden verwendet, um weiche Spannax® Spannköpfe diameterspezifisch zu modifizieren.

Use turning fixture for modifying the chucking diameter of Spannax® chucks.



	Nr./No.
AD 32	S416703
AD 42	S416701
AD 65	S416700
AD 100	S416702



Adaptives Innenspannsystem Quick Change Mandrel System

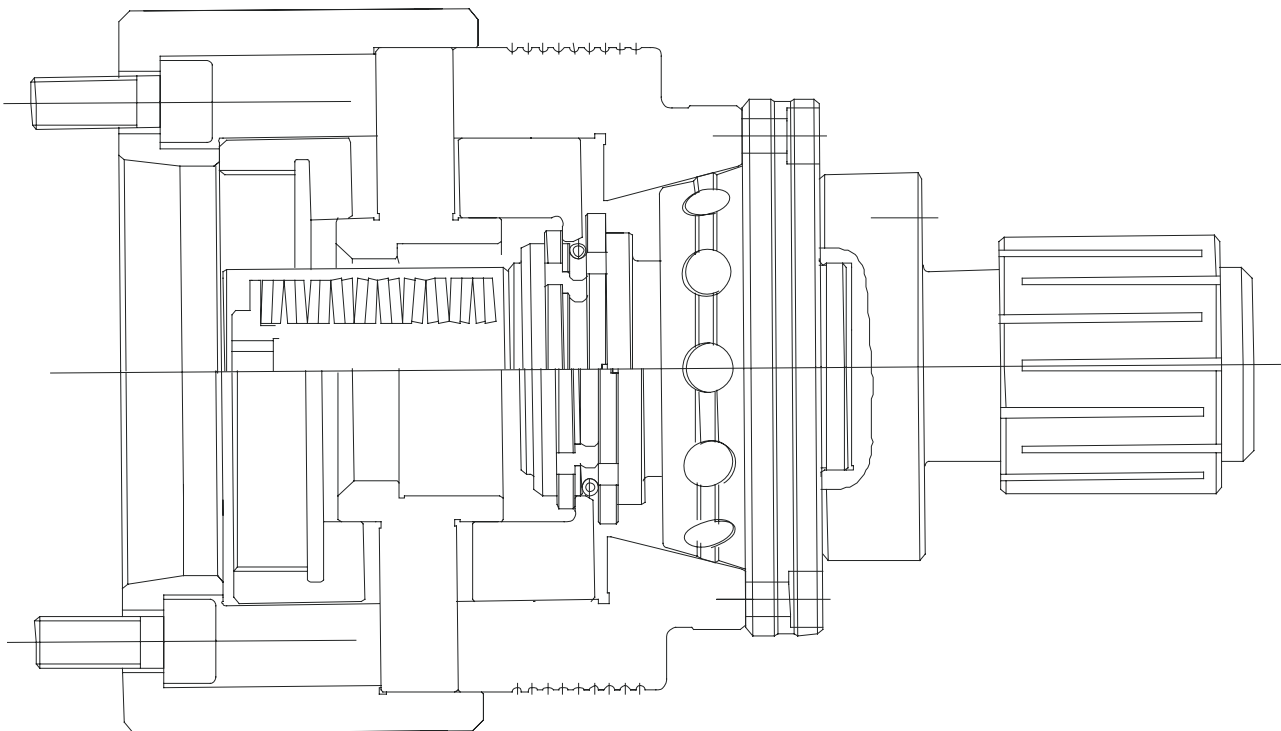
In Verbindung mit Spannax® Drehfuttern und Spannstöcken können Werkstücke innen gespannt werden. Das Umrüsten von einer Aussen- auf Innenspannung ist mit geringstem Aufwand möglich. Eine maximale Umrüstzeit von drei Minuten ist möglich, da sich das System am bereits im Einsatz befindlichen Spannax® Futter andockt.

Spannbereich von 12,5 - 73,5 mm

Workpieces can be clamped on the inside using Spannax® lathe chucks and vices. Change-over from internal to external gripping can be achieved with the least effort.

A maximum change-over time of 3 minutes is only possible because the system is already docked onto the Spannax® already in use.

Clamping range of 12.5 - 73.5 mm

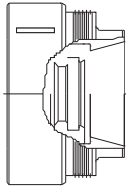


Spannax® Gr. 42

Spannax® Gr. 42

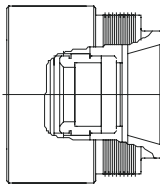
Spannax® Durchgangsfutter Spannax® Through-Hole Chuck

036.9003/00
036.9004/00
036.9017/00



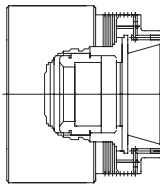
Spannax® Anschlagfutter Spannax® Endstop Chuck

036.9009/00
036.9010/00
036.9011/00
036.9016/00



Spannax® Anschlagfutter mit Airsensing Spannax® Endstop Chuck with Airsensing

036.9021/00



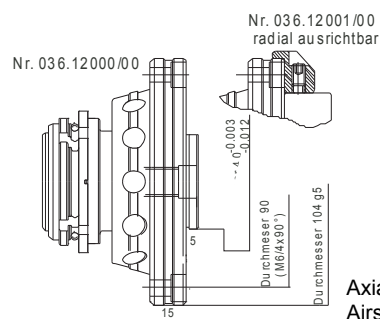
Andere Futtertypen auf Anfrage
Other chuck types on request

Montage

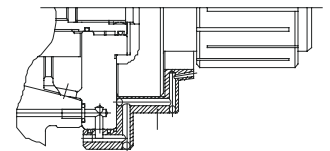
ISA Modul mit vormontiertem Spanndorn in Spannfutter schieben und durch leichten Axialdruck verriegeln. Mit vier Schrauben am Futter befestigen. Zugbolzen einschrauben und sichern.

Assembly

Push the ISA module with pre-assembled mandrel into the chuck and lock by applying light axial pressure. Fix to the chuck with 4 screws. Screw in the draw-bolt and secure.



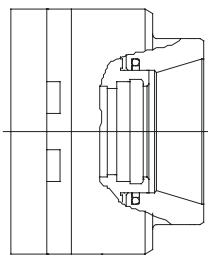
Anschlag Endstop



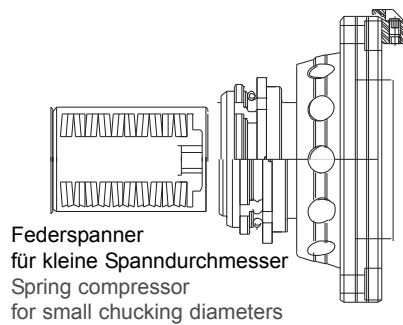
Axialanschlag mit Airsensing Rohling
Nr. 036.12007/00
(Nur in Verbindung mit Spannax-Futter Nr. 036.9021/00)

Axial stop with air sensing, Blank
No. 036.12007/00
(Only together with Spannax chuck No. 036.9021/00)

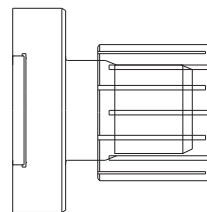
Spannfutter Collet Chuck



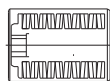
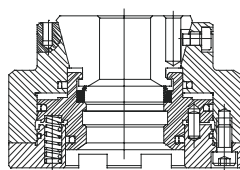
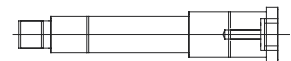
ISA Modul ISA Modul



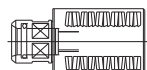
Spanndorn mit Hülse Mandrel with sleeve



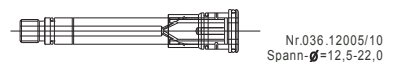
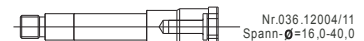
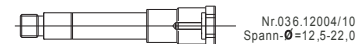
Zugbolzen Draw-Bolt



ohne Airsensing
without Airsensing



mit Airsensing
with Airsensing



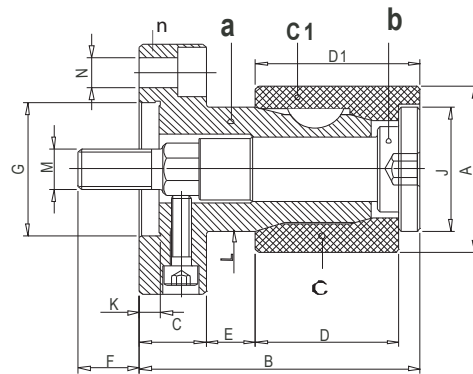
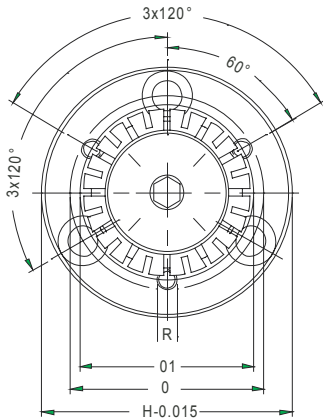
Spreizdorne

Expanding Mandrels

kraftbetätigt

Power-operated

- Expansion der Spannhülsen 0,8 mm
 - Geeignet für automatisches Beladen
 - Wiederholspanngenaugigkeit kleiner 0,012 mm
 - Vulkanisierte Abdichtung der Hülsenschlitze
 - Anzahl der Scheibenfedern = 2
- Expansion of the clamping sleeves, 0.8 mm
 - Suitable for automatic loading
 - Rate of repeating clamping accuracy smaller than 0.012 mm
 - Vulcanized sealing of the sleeve grooves
 - Number of woodruff keys = 2



Typ	Durchmesser A		Nr./No.	Nr./No.	Nr./No.	Nr./No.	F max. (daN)
	Spannbereich min.	Spannbereich max.	a	n	c Ø	c1 Ø	
EM 3A	12,5	22,0	D2096203003	036.12006/00	92-000-21-Spann	92-001-21-Spann	400
EM 2C	16,0	28,0	D2096203002	036.12006/01	92-000-21-Spann	92-051-21-Spann	800
EM 1C	22,0	40,0	D2096203001	036.12006/02	92-000-21-Spann	92-101-21-Spann	1000
EM 18 C	28,5	51,0	D2096203018	036.12006/03	92-000-21-Spann	92-051-21-Spann	1500
EM 4C	41,0	73,0	D2096203004	036.12006/04	92-000-21-Spann	92-201-21-Spann	2100
EM 5C	63,5	89,0	D2096203005	036.12006/05	92-000-21-Spann	92-251-21-Spann	2600
EM 6C	76,2	102,0	D2096203006	036.12006/06	92-000-21-Spann	92-301-21-Spann	3000
EM 7C	89,0	143,0	D2096203003	D2096203003	92-000-21-Spann	92-351-21-Spann	3400
EM 8C	130,0	178,0	D2096203003	D2096203003	92-000-21-Spann	92-401-21-Spann	5000

Typ	A o min.	max.	B	C	D	D1	E	F	G	H	J	K	L	M	N	O	O1
EM 3A	12,5	22,0	60	20	22,0	26,0	14,6	17,5	40	75	11,0	6	12,6	M4	M8	58	28
EM 2C	16,0	28,0	66	20	27,0	32,0	15,0	17,5	40	75	15,0	6	14,1	M8	M8	58	28
EM 1C	22,0	40,0	72	20	32,0	38,0	15,5	17,5	40	75	20,0	6	20,7	M8	M8	58	58
EM 18C	28,5	51,0	79	20	38,0	45,0	15,3	35,0	40	75	26,5	6	26,3	M10	M8	58	58
EM 4C	41,0	73,5	84	20	43,0	50,0	14,8	18,5	40	75	37,5	6	37,0	M12	M8	58	58
EM 5C	63,5	89,0	109	25	51,0	60,0	25,3	25,0	60	120	55,0	6	57,3	M20	M10	94	94
EM 6C	76,2	102,0	118	25	57,0	69,0	24,7	25,0	60	120	74,5	6	71,1	M20	M10	94	94
EM 7C	89,0	143,0	133	30	63,5	78,5	25,2	47,0	100	180	86,5	6	84,1	M24	M12	150	150
EM 8C	130,0	178,0	153	30	79,5	99,5	24,6	22,0	100	180	124,0	6	123,0	M36	M12	150	150

Bei Bohrungen mit erlaubtem Toleranzfeld ist bei Spann-Ø immer das Kleinstmaß anzugeben.

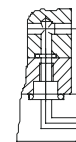
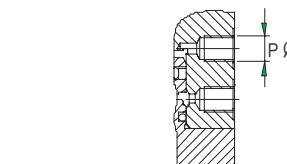
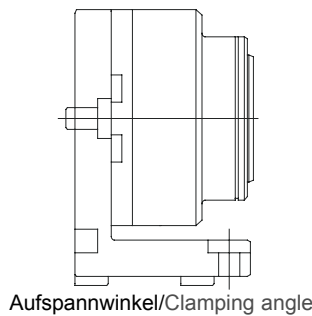
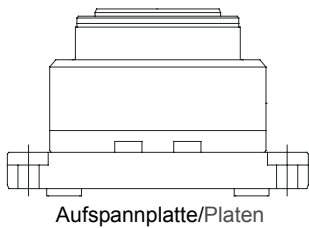
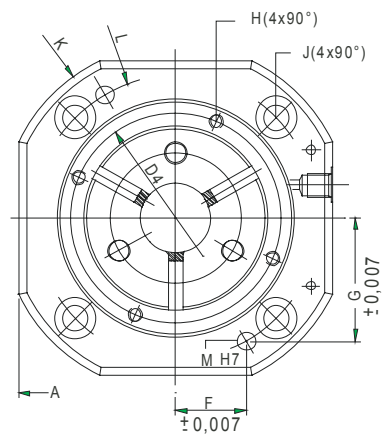
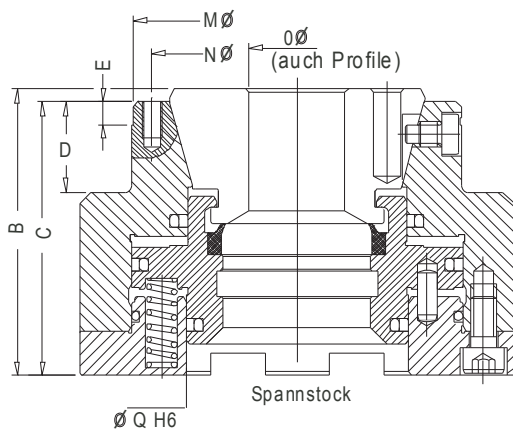
For boreholes with a permitted field of tolerance, the smallest dimension is always to be given for the clamping diameter.

Spannstöcke für Rubber Flex® GT Spannköpfe

Vices For Rubber Flex® GT Chucks

Hydraulisch betätigt
Hydraulically operated

- Zum stationären Spannen von Werkstücken
- Kompakte Bauform
- Extrem hohe Spannkraft
- Geeignet für Paletten - Mehrfachmontage
- For stationary clamping of workpieces
- Compact design
- Extremely high clamping force
- Suitable for multiple assembly on pallets



Hydraulischer Leitungsanschluß
Hydraulic wiring connection

Hydraulischer Plattenanschluß
Hydraulic plate connection

wahlweise/
Optional
Standard

Typ		Nr./No.	Nr./No.	Nr./No.	A	B	C	D	E	F	G	H
		Spannstock										
S 42 E	einfach-wirkend	036.11010/00	Aufspannplatte	Aufspannwinkel								
S 42 D	doppelt-wirkend	036.11010/00	036.11010/20	036.11010/21	135,0	89,0	85,0	28,0	7,0	30,5	52,8	M6
S 65 E	einfach-wirkend	036.11012/00										
S 42 D	doppelt-wirkend	036.11013/00	036.11012/20	036.11012/21	160,0	100,0	95,0	30,0	8,0	37,5	65,0	M6

Typ	J	K	L	M	N	O	P	Q	Hydraulikdruck max.	Zugkraft max.	Radialkraft max.
S 42 E											
S 42 D	11,0	150,0	122,0	8,0	90,0	4,0-42,0	G1/8"	69,0	75 bar	35000 N	80000 N
S 65 E											
S 65 D	13,0	180,0	150,0	10,0	112,0	5,0-65	G1/8"	94,0	75 bar	45000 N	105000 N

Bitte tragen Sie in die folgende Tabelle die Anschlussmaße des Druckrohres und der Spindel ein.

Please check the dimensions of machine spindle and fix it in following form.

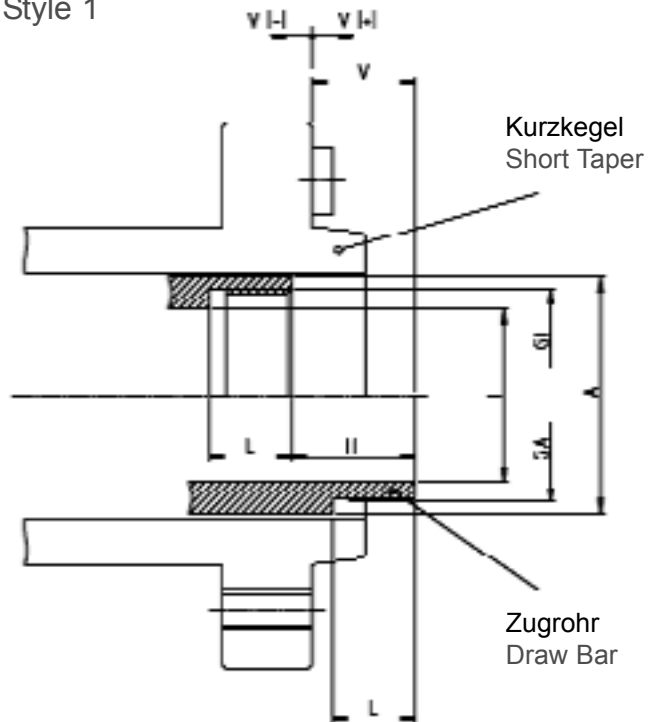
für Maschinen for machine tool	
für Ausführung 1 oder 2 Style 1 or 2	
Kurzkegelgröße (Ausf. 1) Short Taper Size (Style 1)	
Zylinderpass (Ausf. 2) Cylindric (Style 2)	
A	
B	
GA	
GI	
H	
I	
L	
LK	
T	
V	
ZA	
ZI	

Bei Maß V unbedingt Vorzeichen angeben!
Bei Maß B unbedingt Anzahl angeben!

Please indicate Dimension V as positiv or negativ!
Please indicate B as how many holes!

Einbaumaße Installations Dimensions

Ausführung 1 Style 1



Ausführung 2 Style 2

