

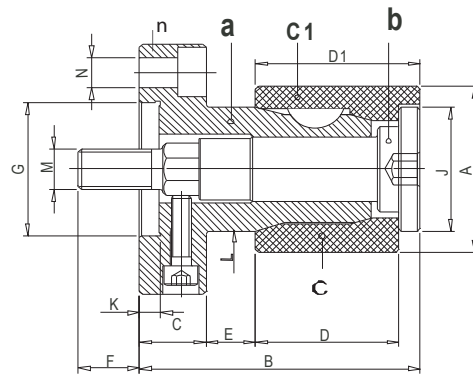
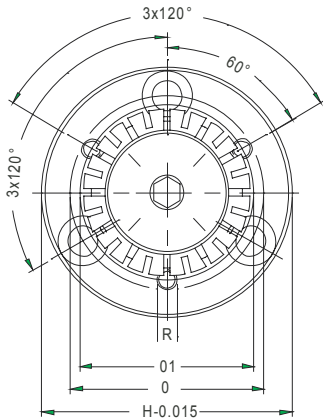
Spreizdorne

Expanding Mandrels

kraftbetätigt

Power-operated

- Expansion der Spannhülsen 0,8 mm
 - Geeignet für automatisches Beladen
 - Wiederholspanngenaugigkeit kleiner 0,012 mm
 - Vulkanisierte Abdichtung der Hülsenschlitze
 - Anzahl der Scheibenfedern = 2
- Expansion of the clamping sleeves, 0.8 mm
 - Suitable for automatic loading
 - Rate of repeating clamping accuracy smaller than 0.012 mm
 - Vulcanized sealing of the sleeve grooves
 - Number of woodruff keys = 2



Typ	Durchmesser A		Nr./No.	Nr./No.	Nr./No.	Nr./No.	F max. (daN)
	Spannbereich min.	Spannbereich max.	a	n	c Ø	c1 Ø	
EM 3A	12,5	22,0	D2096203003	036.12006/00	92-000-21-Spann	92-001-21-Spann	400
EM 2C	16,0	28,0	D2096203002	036.12006/01	92-000-21-Spann	92-051-21-Spann	800
EM 1C	22,0	40,0	D2096203001	036.12006/02	92-000-21-Spann	92-101-21-Spann	1000
EM 18 C	28,5	51,0	D2096203018	036.12006/03	92-000-21-Spann	92-051-21-Spann	1500
EM 4C	41,0	73,0	D2096203004	036.12006/04	92-000-21-Spann	92-201-21-Spann	2100
EM 5C	63,5	89,0	D2096203005	036.12006/05	92-000-21-Spann	92-251-21-Spann	2600
EM 6C	76,2	102,0	D2096203006	036.12006/06	92-000-21-Spann	92-301-21-Spann	3000
EM 7C	89,0	143,0	D2096203003	D2096203003	92-000-21-Spann	92-351-21-Spann	3400
EM 8C	130,0	178,0	D2096203003	D2096203003	92-000-21-Spann	92-401-21-Spann	5000

Typ	A o min.	max.	B	C	D	D1	E	F	G	H	J	K	L	M	N	O	O1
EM 3A	12,5	22,0	60	20	22,0	26,0	14,6	17,5	40	75	11,0	6	12,6	M4	M8	58	28
EM 2C	16,0	28,0	66	20	27,0	32,0	15,0	17,5	40	75	15,0	6	14,1	M8	M8	58	28
EM 1C	22,0	40,0	72	20	32,0	38,0	15,5	17,5	40	75	20,0	6	20,7	M8	M8	58	58
EM 18C	28,5	51,0	79	20	38,0	45,0	15,3	35,0	40	75	26,5	6	26,3	M10	M8	58	58
EM 4C	41,0	73,5	84	20	43,0	50,0	14,8	18,5	40	75	37,5	6	37,0	M12	M8	58	58
EM 5C	63,5	89,0	109	25	51,0	60,0	25,3	25,0	60	120	55,0	6	57,3	M20	M10	94	94
EM 6C	76,2	102,0	118	25	57,0	69,0	24,7	25,0	60	120	74,5	6	71,1	M20	M10	94	94
EM 7C	89,0	143,0	133	30	63,5	78,5	25,2	47,0	100	180	86,5	6	84,1	M24	M12	150	150
EM 8C	130,0	178,0	153	30	79,5	99,5	24,6	22,0	100	180	124,0	6	123,0	M36	M12	150	150

Bei Bohrungen mit erlaubtem Toleranzfeld ist bei Spann-Ø immer das Kleinstmaß anzugeben.

For boreholes with a permitted field of tolerance, the smallest dimension is always to be given for the clamping diameter.